



MARCH
2023

Electric League Newsletter





Spring Golf Tournament

Registration Link



SPRING GOLF TOURNAMENT

THURSDAY,
May 18, 2023

DRUMM FARM
GOLF COURSE

8:00AM
CHECK IN,
DRIVING RANGE

9:00AM
SHOTGUN

\$500
PER FOURSOME



BRING CASH for 50/50 POT!
Benefits Scholarship Foundation



PAY OUTS (WOW!)

(2) Flights: 1st & 2nd Place
(5) \$50 Cash Prize Contest Holes
Skins Game
Charity Hole & Betting Hole (1/2 the Pot)





2023 Board of Directors

OFFICERS:

Courtney Connor | President
Board of Public Utilities

Julie Dietrich | Vice President
Evergy

Scott Croy | Secretary/Treasurer
Graybar Electric Co

Mary Kay Alitz | Imm. Past President
City of Independence

VICE PRESIDENTS:

Chris Wallis | Contractor VP
Capitol Electric Construction

Jake Silva | Distributor VP
WESCO Distribution

Mark Bishop | Agents VP
C&O Sales

Issac Anderson | Engineer VP
Schneider Electric

Jennifer Newbold | Utilities VP
City of Independence

Manufacturer VP - Currently Vacant

DIRECTORS:

Alex Harris
RB sales Corporation

Kelly Hoss
Power Equipment Sales Co

Brandon Godsey
Aglix Solutions

Membership Application
Get Connected Today!





Featured Newsletter Advertisers

NEWSLETTER ADVERTISERS SPOTLIGHT



AIR POWER
CONSULTANTS

www.airpowerconsultants.com



www.capitalelectric.com



www.jmgpromotions.com

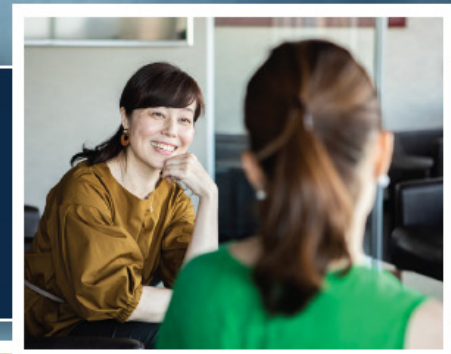




FEDERATED INSURANCE

Who is Counting on You to Secure the Future of Your Business?

Your business provides employees with a career, customers with quality services, and your family with financial security. Protect your life's work with the help of Federated's network of independent estate planning attorneys.



AN ASSOCIATION MEMBER BENEFIT FOR 119 YEARS
DIRECT, LOCAL MARKETING REPRESENTATIVES AUTO
PROPERTY AND CASUALTY SELF-INSURED RETENTION
POLICYHOLDER SURPLUS LIVE VOICE CUSTOMER SERVICE
MYSHIELD* TAILORED, INDUSTRY-SPECIFIC COVERAGE
BUSINESS SUCCESSION AND ESTATE PLANNING STABLE
FACE-TO-FACE RELATIONSHIPS FINANCIAL STRENGTH
MUTUAL COMPANY DIRECT CLAIMS REPRESENTATIVES
500+ EXCLUSIVE ASSOCIATION RECOMMENDATIONS
ESTATE PLANNING ATTORNEY NETWORK ANNUITIES

IT'S OUR BUSINESS TO PROTECT YOURS®

WE'RE BETTERTOGETHER LIFE AND DISABILITY INCOME
PRIVATE BONUS PLANS KEY PERSON COVERAGE
WORKERS COMPENSATION HIRING PRACTICES
FEDERATED DRIVESAFE™ TELEMATICS SOLUTION
RISK MANAGEMENT RESOURCE CENTER
EMPLOYMENT RELATED PRACTICES LIABILITY
EMPLOYMENT LAW ATTORNEY NETWORK
BONDING EMPLOYEE SAFETY TRAINING
RISK MANAGEMENT ACADEMY
CLIENT CONTACT CENTER
FIELD RISK CONSULTANTS
CERTIFICATE CENTER
SURETY SPECIALISTS
MANAGED CARE
CYBER



Scan to learn more
about **BUSINESS
SUCCESSION AND
ESTATE PLANNING**
support.



Commercial Insurance Property & Casualty | Life & Disability Income | Workers Compensation | Business Succession and Estate Planning | Bonding
Federated Mutual Insurance Company and its subsidiaries* * | federatedinsurance.com

23.04 Ed. 2/23 *View A.M. Best Rating Guide Information at www.ambest.com. **Not licensed in all states. © 2022 Federated Mutual Insurance Company

Happy Birthday & More!

February Birthdays!

C&O Sales

Cindy Hopewell, Merritt Foreman,
Kevin O'Neill, Mischal Pickett, Jeff Clark

Crescent Electric Supply/B.A Supply
Cori Conway

Square D

Jeff Taylor

February Service Anniversaries!

CBM

Tim Locker (15 Years)

C&O Sales

Kip Springer (14 Years)
Shelly Oliverio (14 Years)
Cindy Hopewell (10 Years)
Jeff Clark (10 Years)

Congratulations to Cindy Hopewell who will be retiring,
after 35 years in our industry, Mid-March!!

Hope everyone had a nice Valentines Day after watching our Chiefs win
THE Super Bowl!!!! Super Bowl win, new airport,
NFL Draft.....great year to be a part of Greater Kansas City!!

FEDERATED INSURANCE
It's Our Business to Protect Yours 

Safety Training Resources and HR Support at Your Fingertips

Access industry-specific training, sample forms and policies, an employee handbook builder tool, and more 24/7 with mySHIELD®.

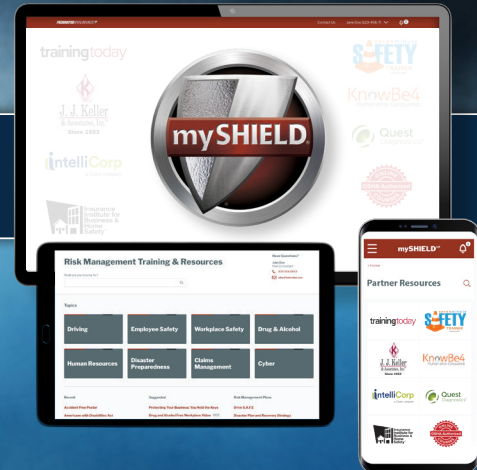
AN ASSOCIATION MEMBER BENEFIT FOR 119 YEARS
DIRECT, LOCAL MARKETING REPRESENTATIVES AUTO
PROPERTY AND CASUALTY SELF-INSURED RETENTION
POLICYHOLDER SURPLUS LIVE VOICE CUSTOMER SERVICE
mySHIELD® TAILORED, INDUSTRY-SPECIFIC COVERAGE
BUSINESS SUCCESSION AND ESTATE PLANNING STABLE
FACE-TO-FACE RELATIONSHIPS FINANCIAL STRENGTH
MUTUAL COMPANY DIRECT CLAIMS REPRESENTATIVES
500+ EXCLUSIVE ASSOCIATION RECOMMENDATIONS
ESTATE PLANNING ATTORNEY NETWORK ANNUITIES

**IT'S OUR BUSINESS TO PROTECT ELECTRIC
LEAGUE OF MISSOURI & KANSAS MEMBERS**

WE'RE BETTER TOGETHER LIFE AND DISABILITY INCOME
PRIVATE BONUS PLANS KEY PERSON COVERAGE
WORKERS COMPENSATION HIRING PRACTICES
FEDERATED DRIVESAFE™ TELEMATICS SOLUTION
RISK MANAGEMENT RESOURCE CENTER
EMPLOYMENT RELATED PRACTICES LIABILITY
EMPLOYMENT LAW ATTORNEY NETWORK
BONDING EMPLOYEE SAFETY TRAINING
RISK MANAGEMENT ACADEMY
CLIENT CONTACT CENTER
FIELD RISK CONSULTANTS
CERTIFICATE CENTER
SURETY SPECIALISTS
MANAGED CARE
CYBER

LEARN MORE

about mySHIELD®.



The content of this publication is for general information purposes only. Consult with a qualified professional when you have detailed questions regarding any topic in this publication.

Commercial Insurance | Property & Casualty | Life & Disability Income | Workers Compensation | Business Succession and Estate Planning | Bonding
Federated Mutual Insurance Company and its subsidiaries** | federatedinsurance.com

23.02 Ed. 12/22 *View A.M. Best Rating Guide information at www.ambest.com. **Not licensed in all states. © 2022 Federated Mutual Insurance Company